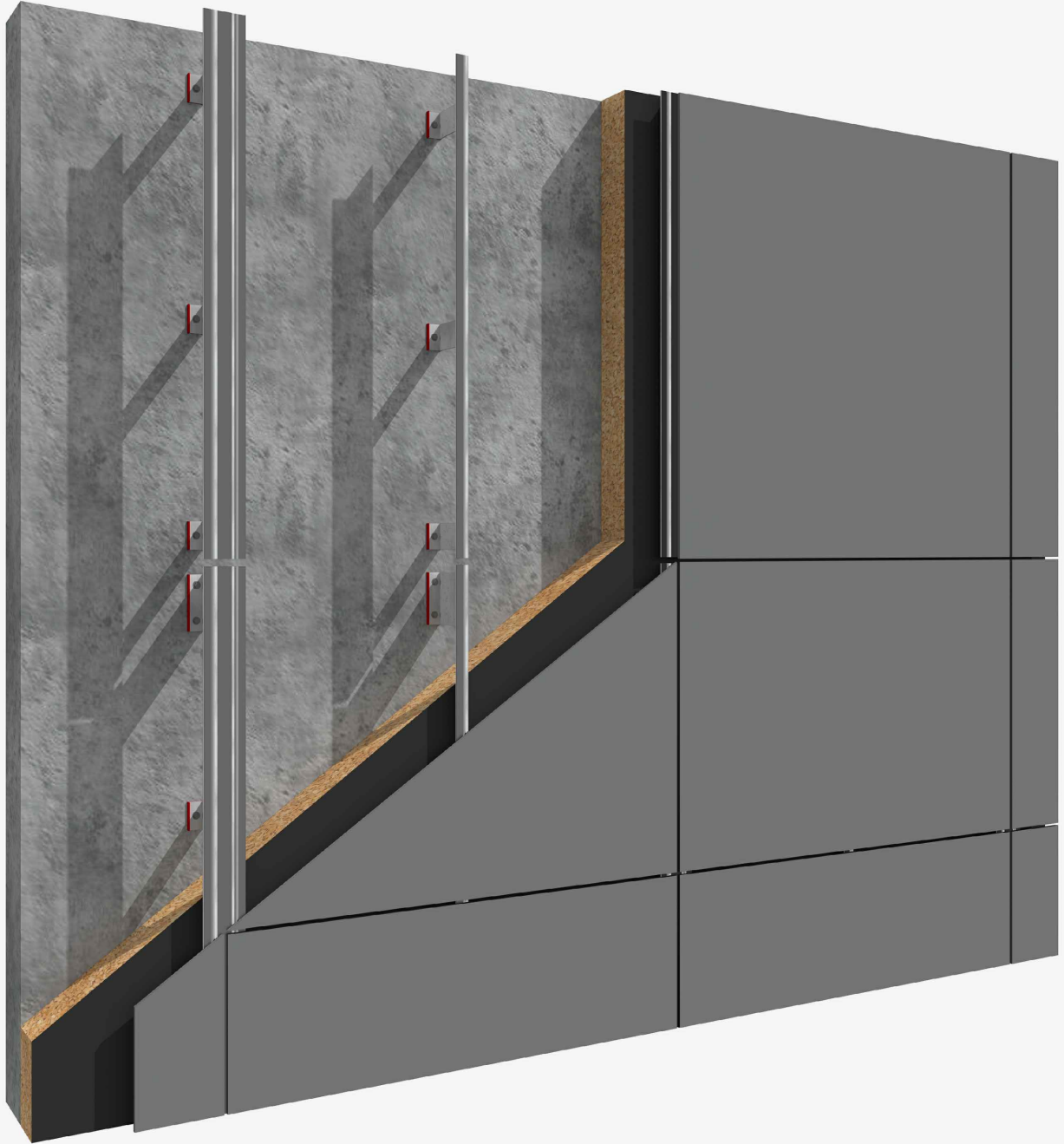
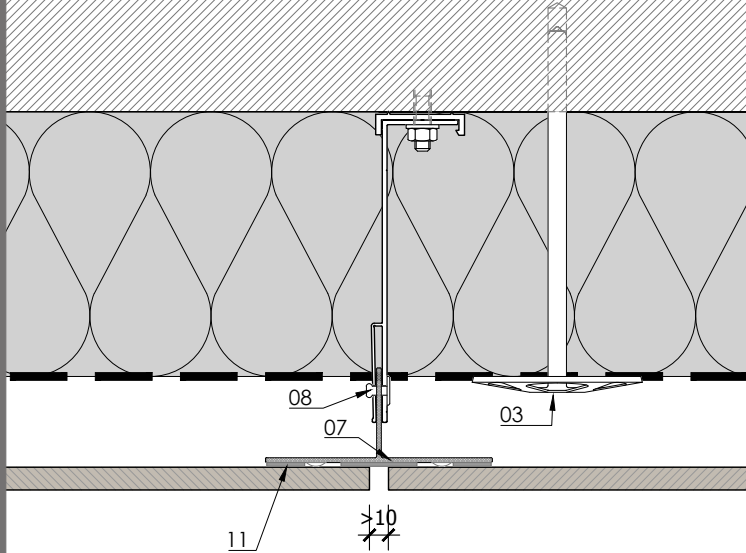


SYSTEM LAPITEC B - FIXING WITH STRUCTURAL BONDING

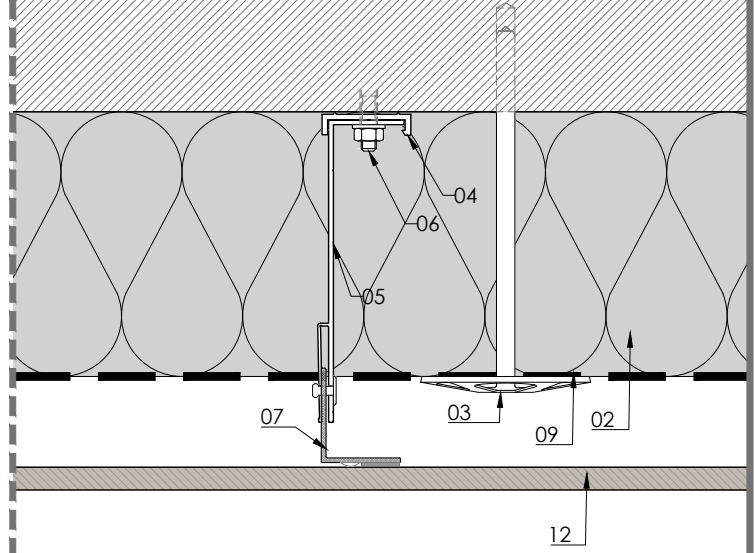


SYSTEM LAPITEC B - FIXING WITH STRUCTURAL BONDING

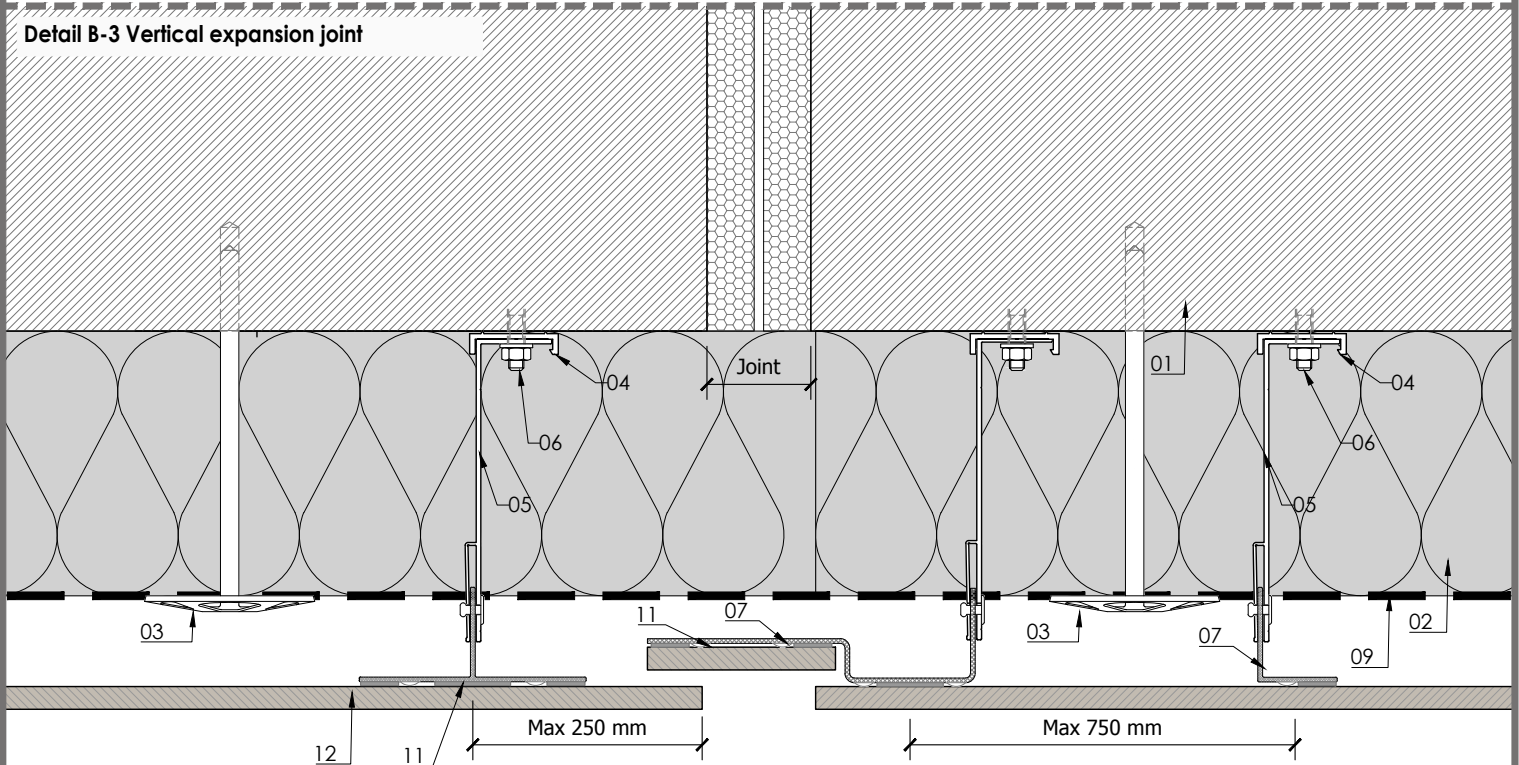
Detail B-1 Vertical joint



Detail-2 Vertical joint



Detail B-3 Vertical expansion joint



MATERIALS:

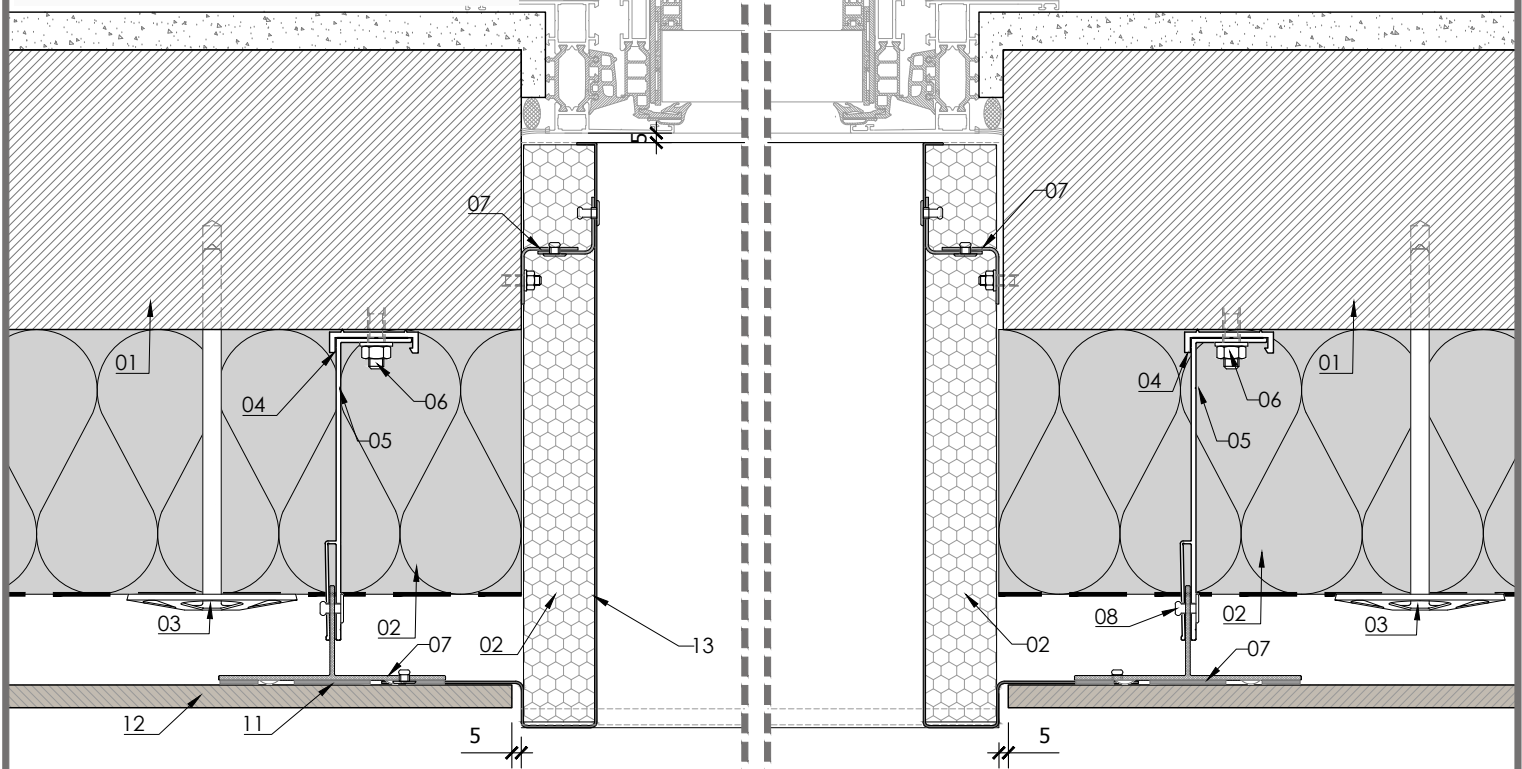
01 - Support (eg: concrete, core bricks ...)
02 - Insulation layer (eg: mineral wool...)
03 - Insulation layer fixing element
04 - Thermo-stop

05 - Bracket (eg: aluminium, galvanised steel ...)
06 - Anchor
07 - Vertical profile
08 - Stainless steel fixings
09 - Vapour barrier

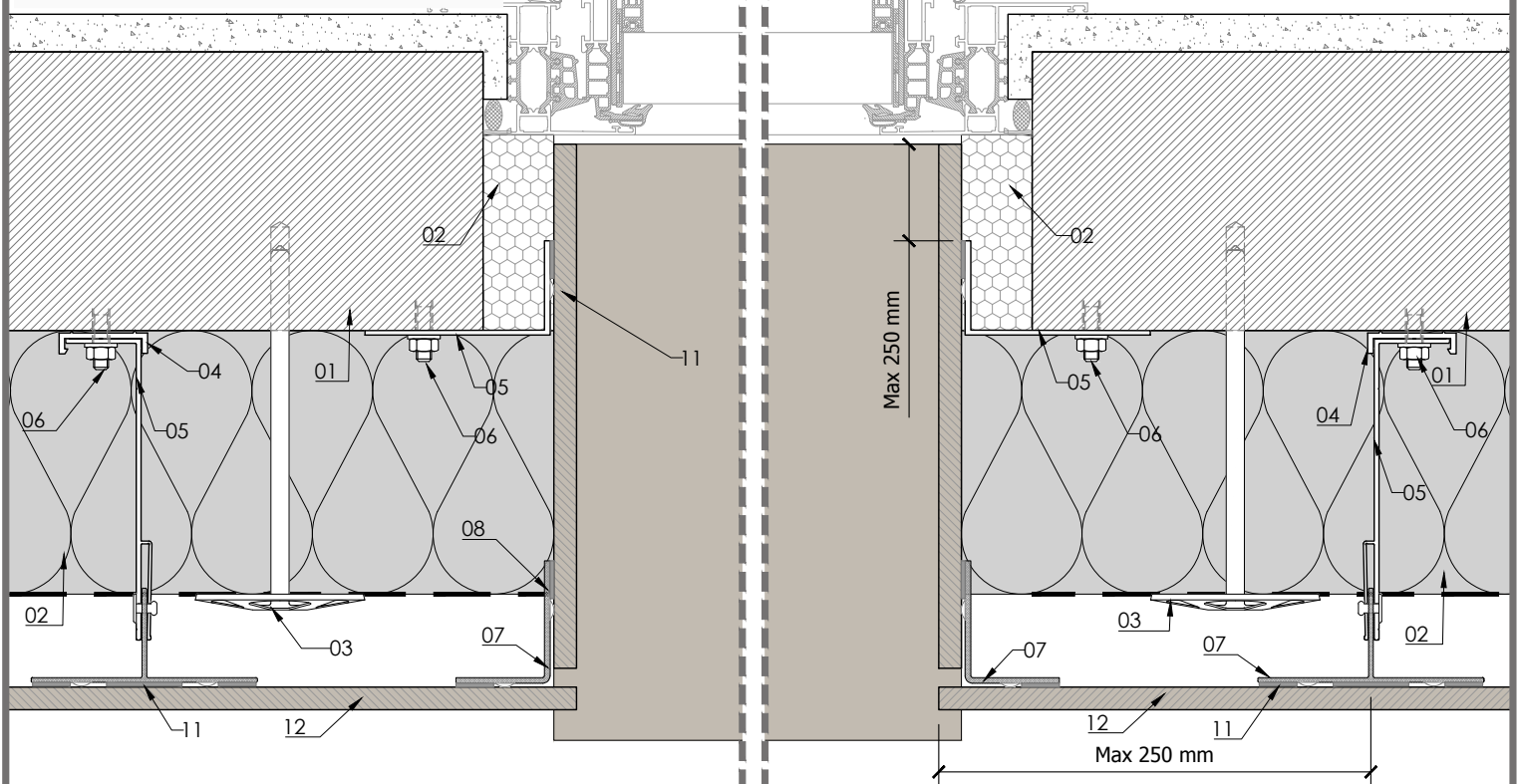
10 - Horizontal rail
11 - Kit for structural bonding
12 - Lapitec 12 mm thickness
13 - Flashing

SYSTEM LAPITEC B - FIXING WITH STRUCTURAL BONDING

Detail B-4 Window jamb solution with flashing



Detail B-5 Window jamb solution with Lapitec



MATERIALS:

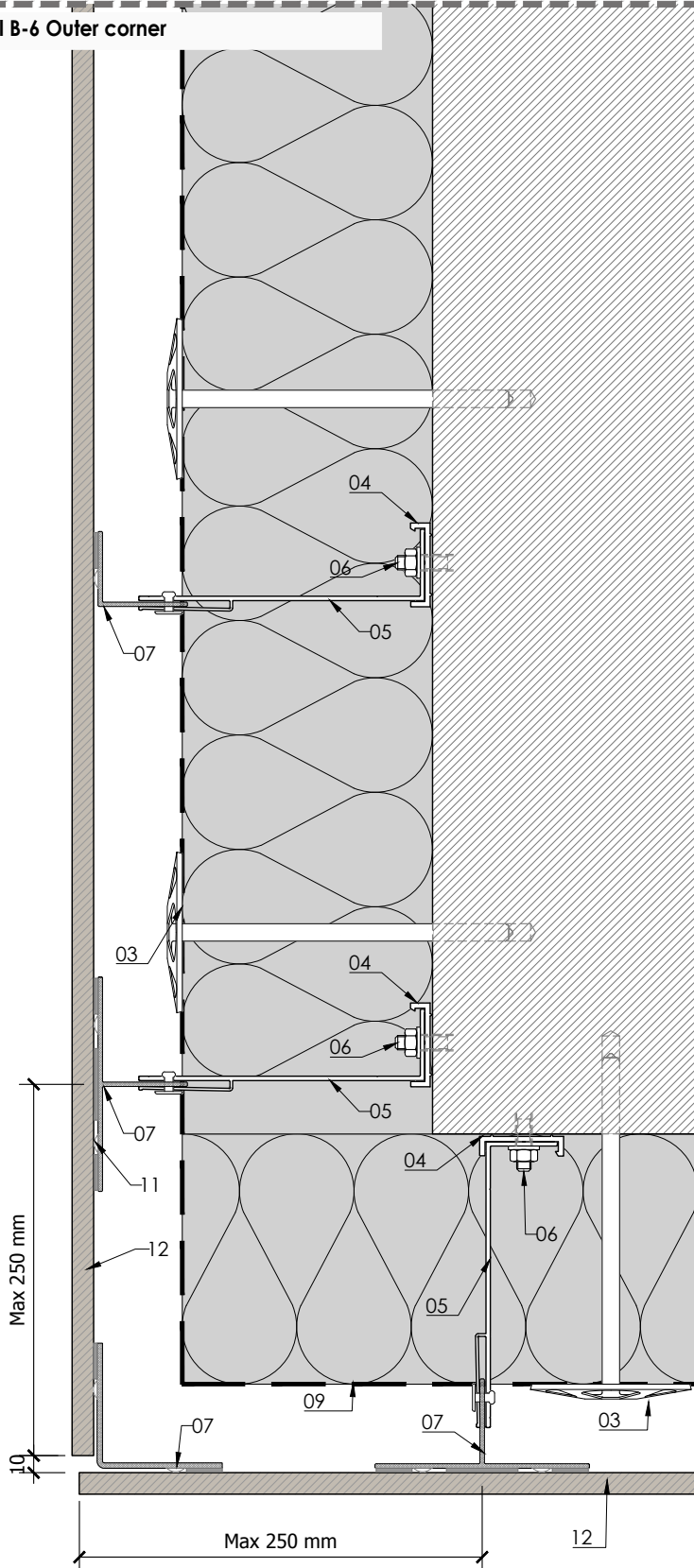
- 01 - Support (eg: concrete, core bricks ...)
- 02 - Insulation layer (eg: mineral wool..)
- 03 - Insulation layer fixing element
- 04 - Thermo-stop

- 05 - Bracket (eg: aluminium, galvanised steel ...)
- 06 - Anchor
- 07 - Vertical profile
- 08 - Stainless steel fixings
- 09 - Vapour barrier

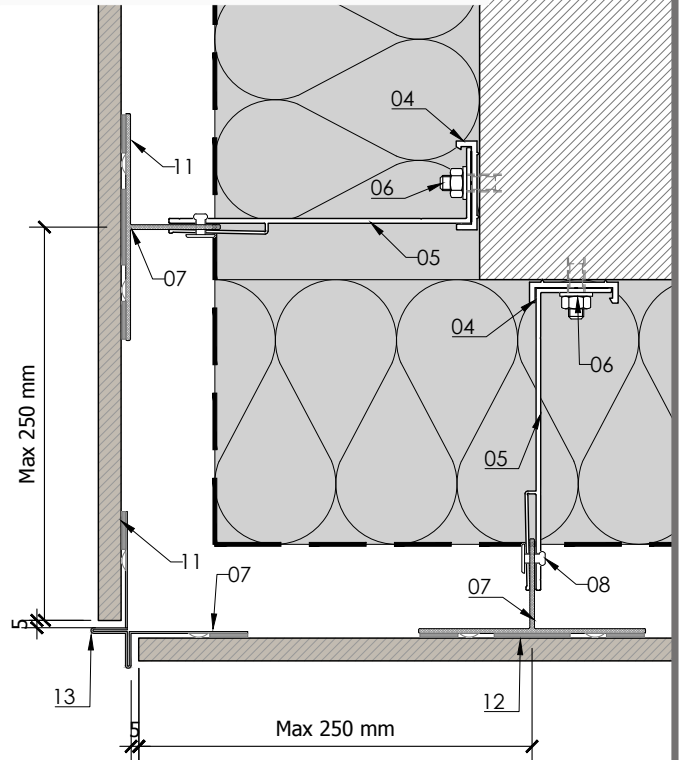
- 10 - Horizontal rail
- 11 - Kit for structural bonding
- 12 - Lapitec 12 mm thickness
- 13 - Flashing

SYSTEM LAPITEC B - FIXING WITH STRUCTURAL BONDING

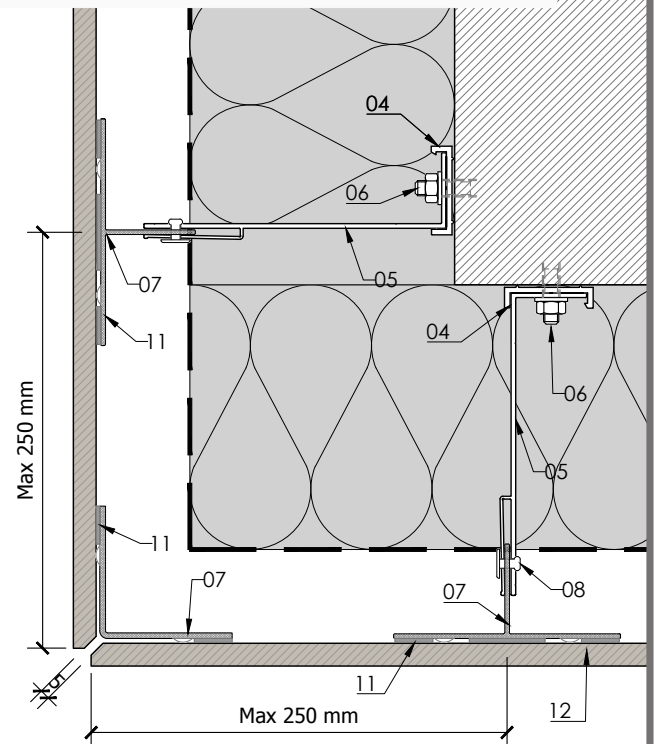
Detail B-6 Outer corner



Detail B-7 Outer corner solution with flashing



Detail B-8 Outer corner solution with beveled slabs



MATERIALS:

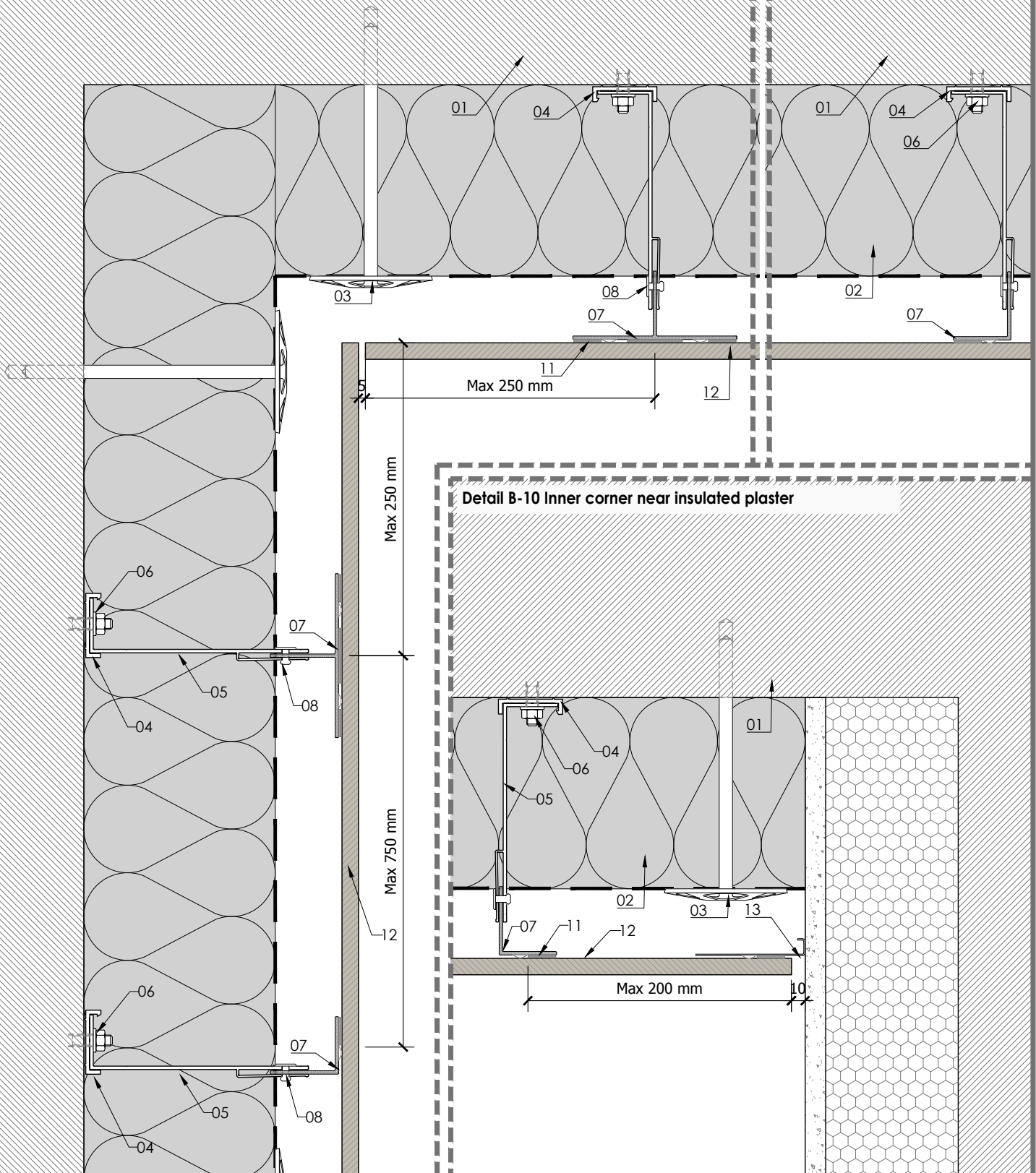
01 - Support (eg: concrete, core bricks ...)
02 - Insulation layer (eg: mineral wool...)
03 - Insulation layer fixing element
04 - Thermo-stop

05 - Bracket (eg: aluminium, galvanised steel ...)
06 - Anchor
07 - Vertical profile
08 - Stainless steel fixings
09 - Vapour barrier

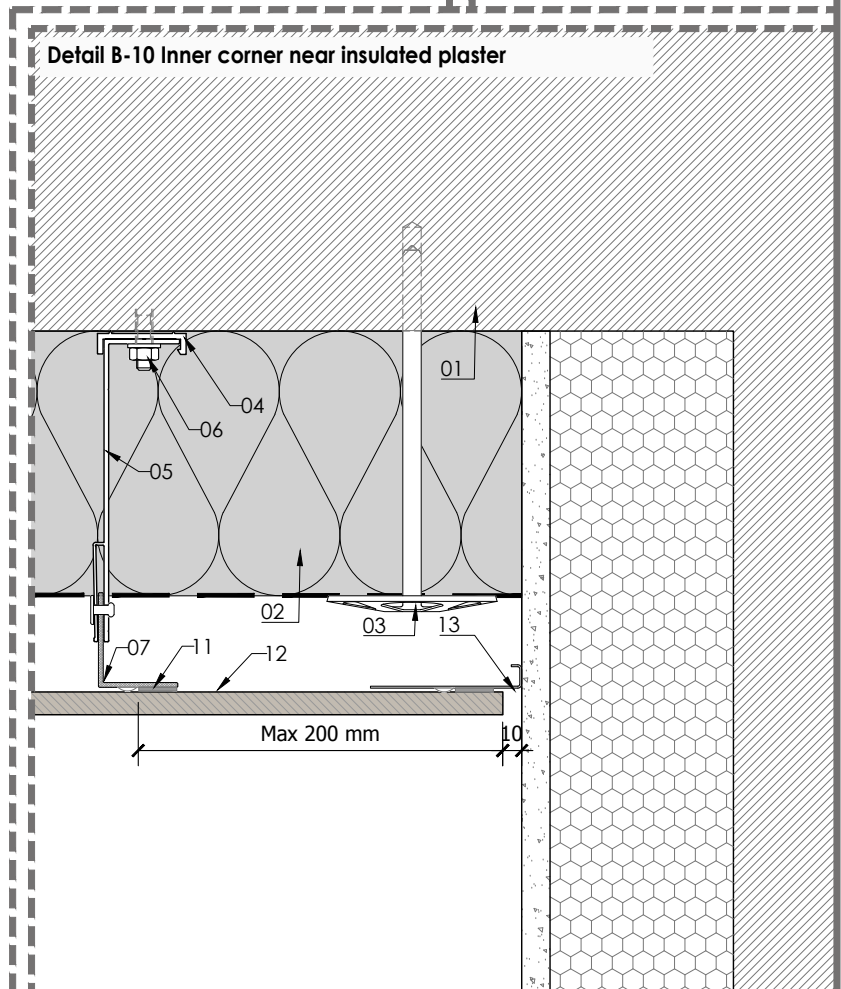
10 - Horizontal rail
11 - Kit for structural bonding
12 - Lapitec 12 mm thickness
13 - Flashing

SYSTEM LAPITEC B - FIXING WITH STRUCTURAL BONDING

Detail B-9 Inner corner solution with beveled slabs



Detail B-10 Inner corner near insulated plaster



MATERIALS:

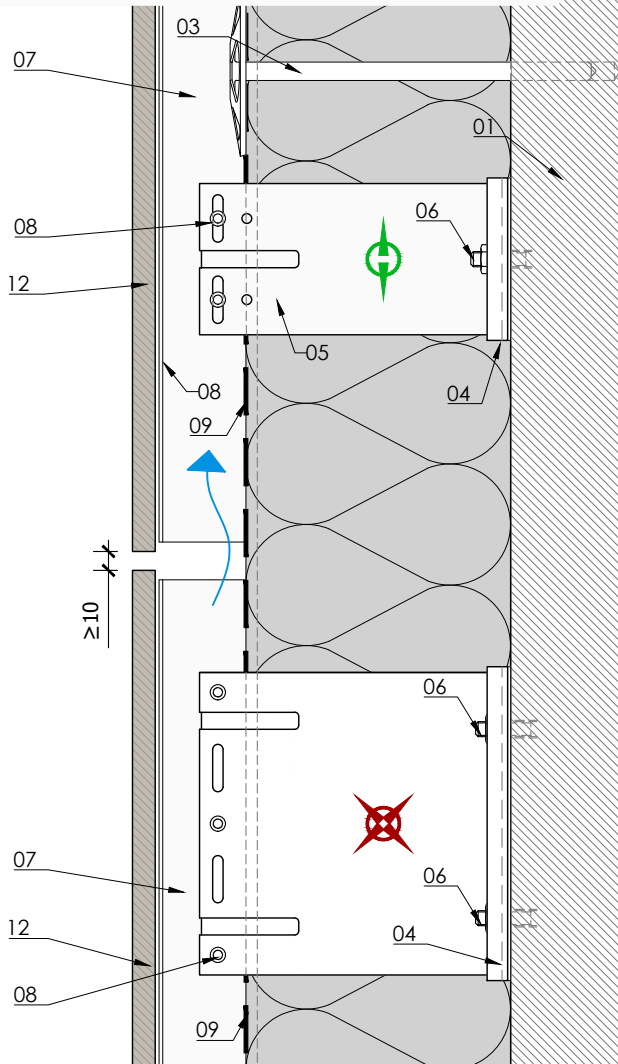
- 01 - Support (eg: concrete, core bricks ...)
- 02 - Insulation layer (eg: mineral wool..)
- 03 - Insulation layer fixing element
- 04 - Thermo-stop

- 05 - Bracket (eg: aluminium, galvanised steel ...)
- 06 - Anchor
- 07 - Vertical profile
- 08 - Stainless steel fixings
- 09 - Vapour barrier

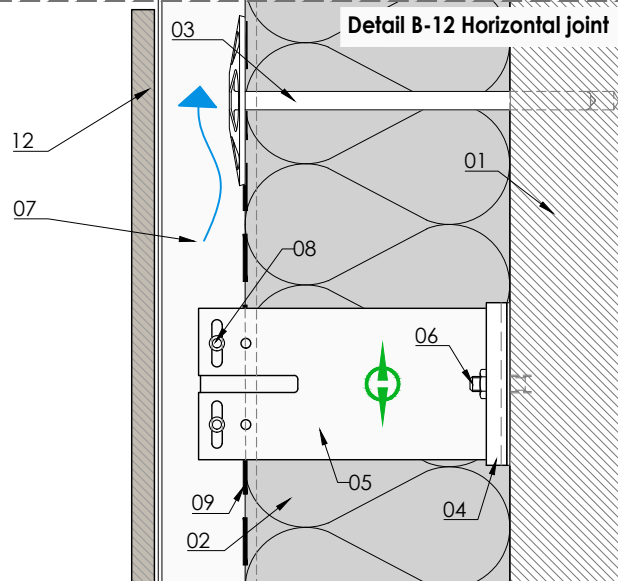
- 10 - Horizontal rail
- 11 - Kit for structural bonding
- 12 - Lapitec 12 mm thickness
- 13 - Flashing

SYSTEM LAPITEC B - FIXING WITH STRUCTURAL BONDING

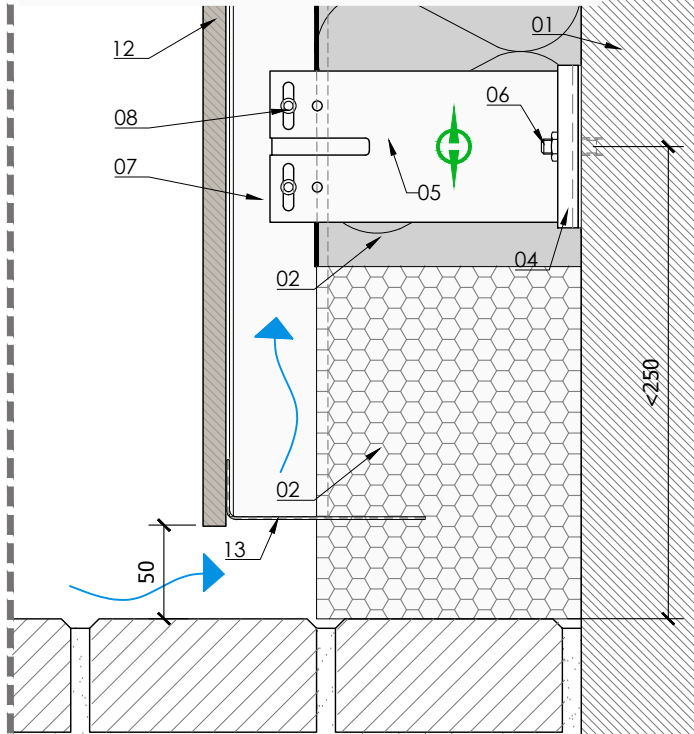
Detail B-11 Horizontal joint (T profile junction)



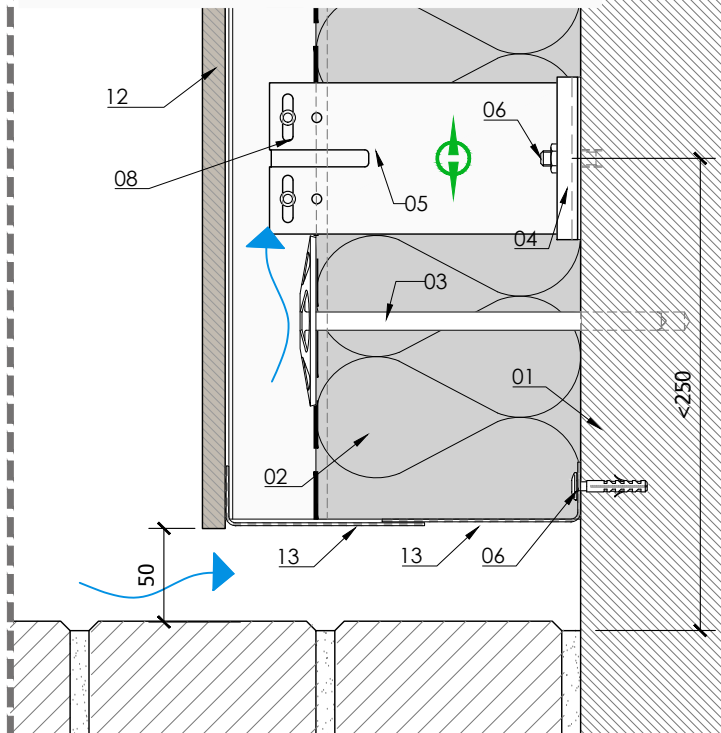
Detail B-12 Horizontal joint



Detail B-13 Baseboard termination with insulation



Detail B-14 Baseboard termination without insulation



MATERIALS:

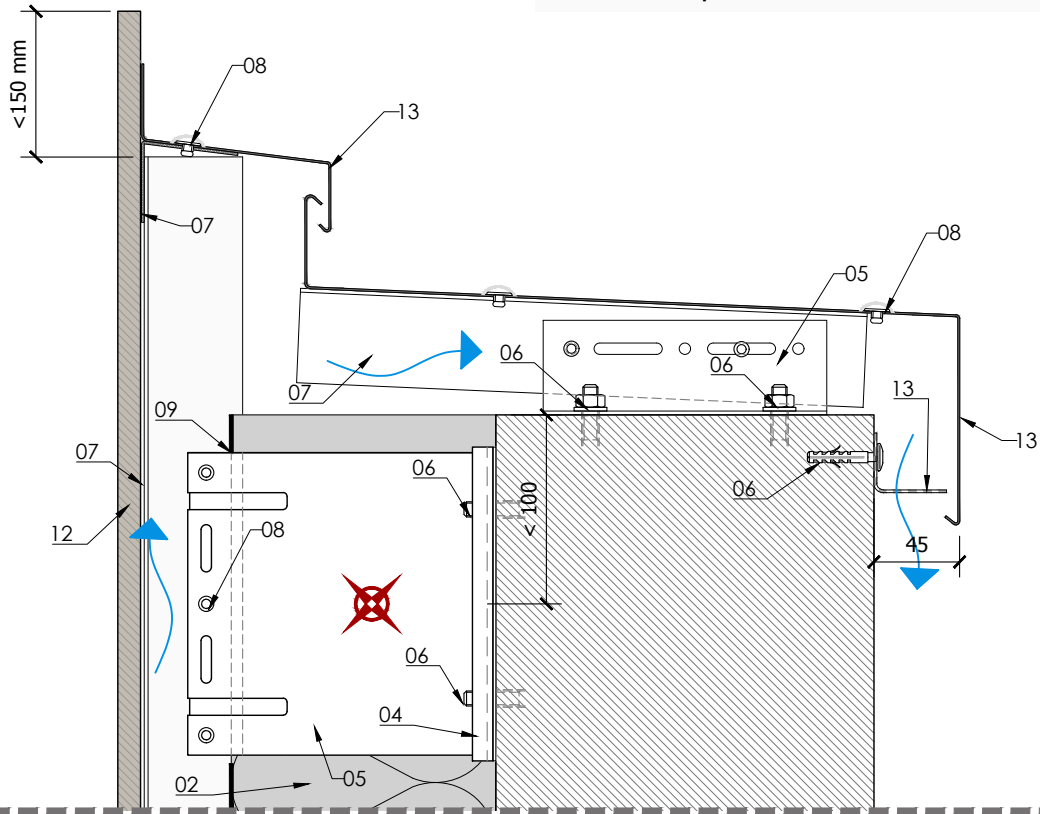
01 - Support (eg: concrete, core bricks ...)
02 - Insulation layer (eg: mineral wool...)
03 - Insulation layer fixing element
04 - Thermo-stop

05 - Bracket (eg: aluminium, galvanised steel ...)
06 - Anchor
07 - Vertical profile
08 - Stainless steel fixings
09 - Vapour barrier

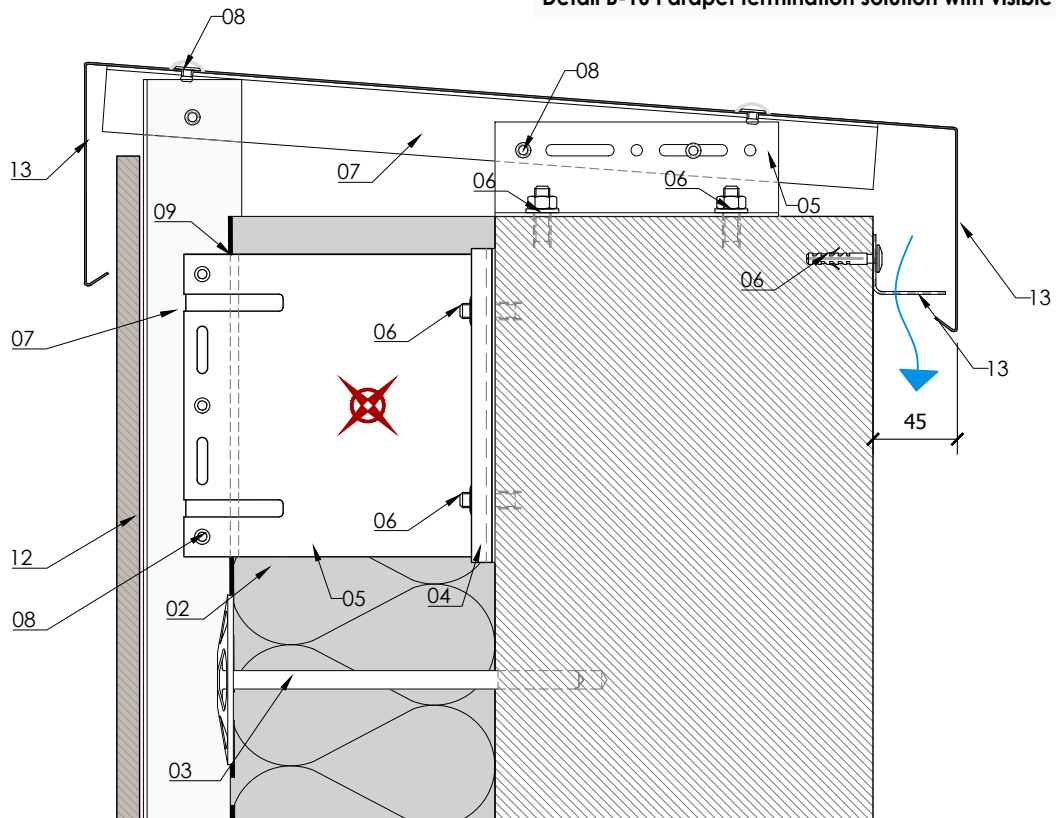
10 - Horizontal rail
11 - Kit for structural bonding
12 - Lapitec 12 mm thickness
13 - Flashing

SYSTEM LAPITEC B - FIXING WITH STRUCTURAL BONDING

Detail B-15 Parapet termination solution with invisible flashing



Detail B-16 Parapet termination solution with visible flashing



MATERIALS:

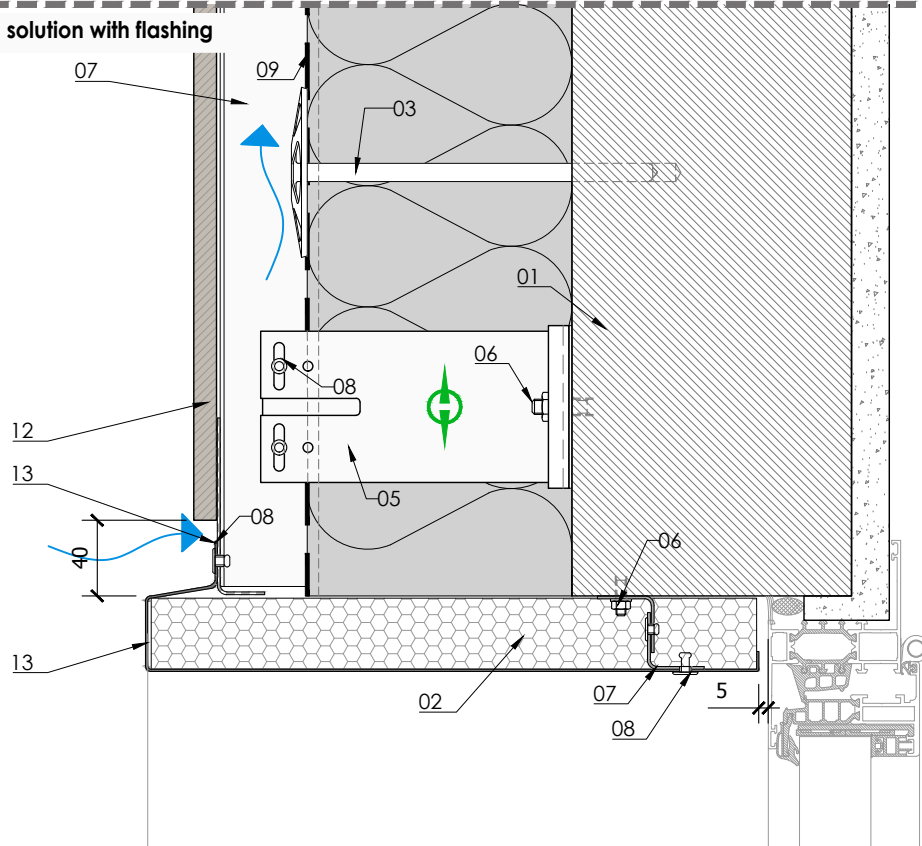
- 01 - Support (eg: concrete, core bricks ...)
- 02 - Insulation layer (eg: mineral wool..)
- 03 - Insulation layer fixing element
- 04 - Thermo-stop

- 05 - Bracket (eg: aluminium, galvanised steel ...)
- 06 - Anchor
- 07 - Vertical profile
- 08 - Stainless steel fixings
- 09 - Vapour barrier

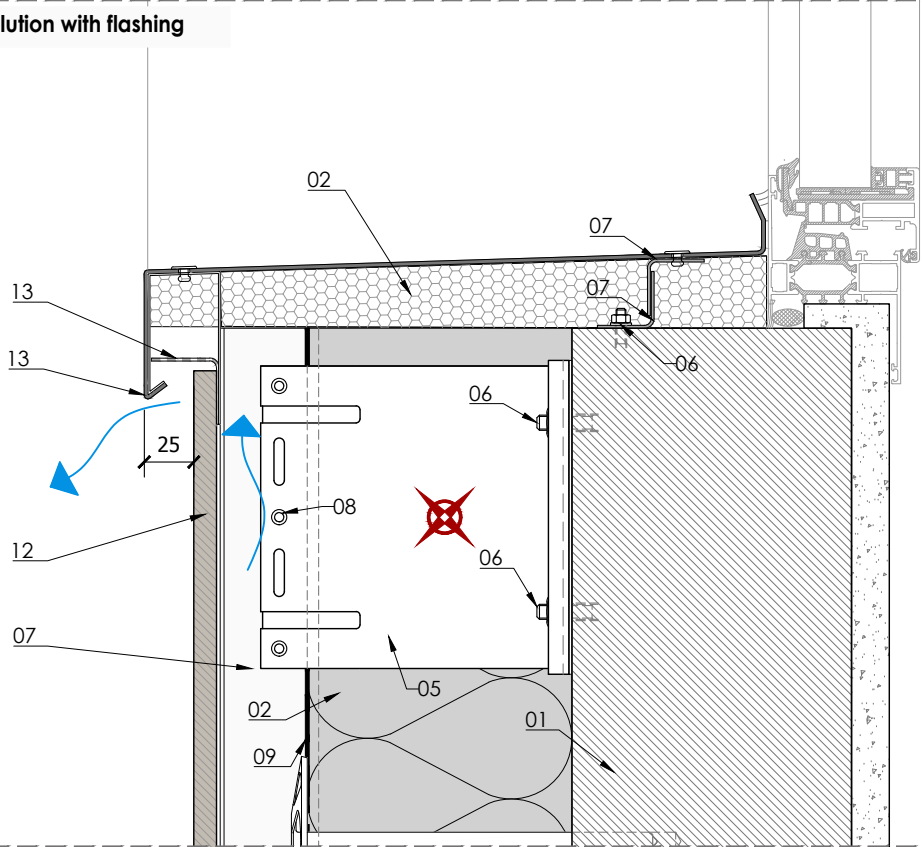
- 10 - Horizontal rail
- 11 - Kit for structural bonding
- 12 - Lapitec 12 mm thickness
- 13 - Flashing

SYSTEM LAPITEC B - FIXING WITH STRUCTURAL BONDING

Detail B-17 Window lintel solution with flashing



Detail B-18 Windowsill solution with flashing



MATERIALS:

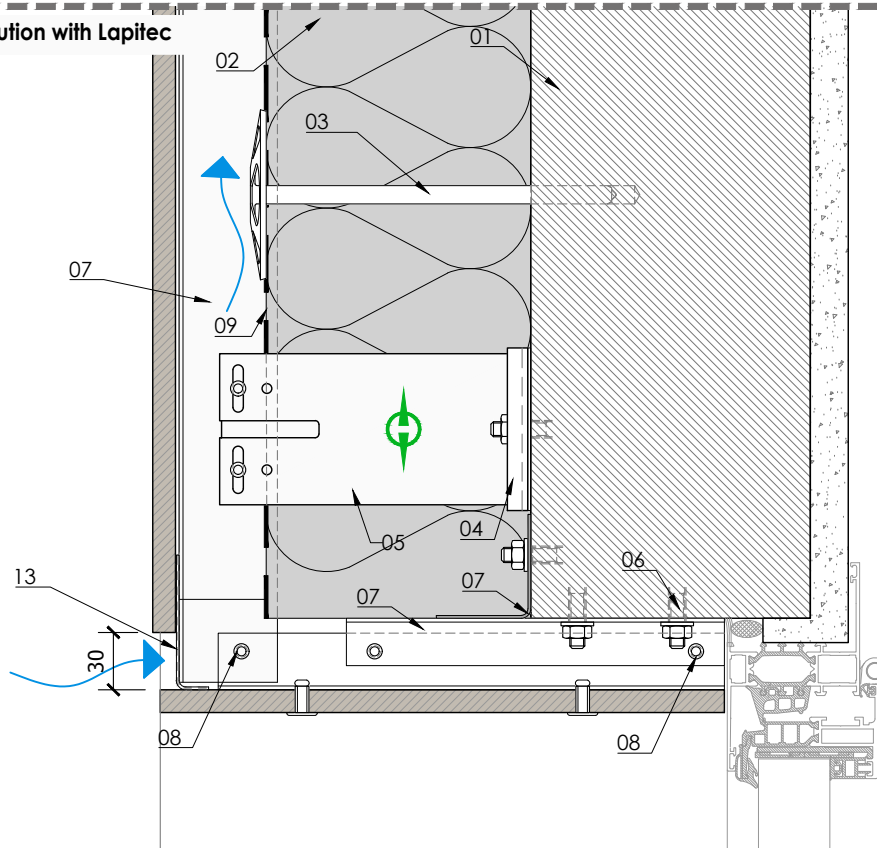
- 01 - Support (eg: concrete, core bricks ...)
- 02 - Insulation layer (eg: mineral wool..)
- 03 - Insulation layer fixing element
- 04 - Thermo-stop

- 05 - Bracket (eg: aluminium, galvanised steel ...)
- 06 - Anchor
- 07 - Vertical profile
- 08 - Stainless steel fixings
- 09 - Vapour barrier

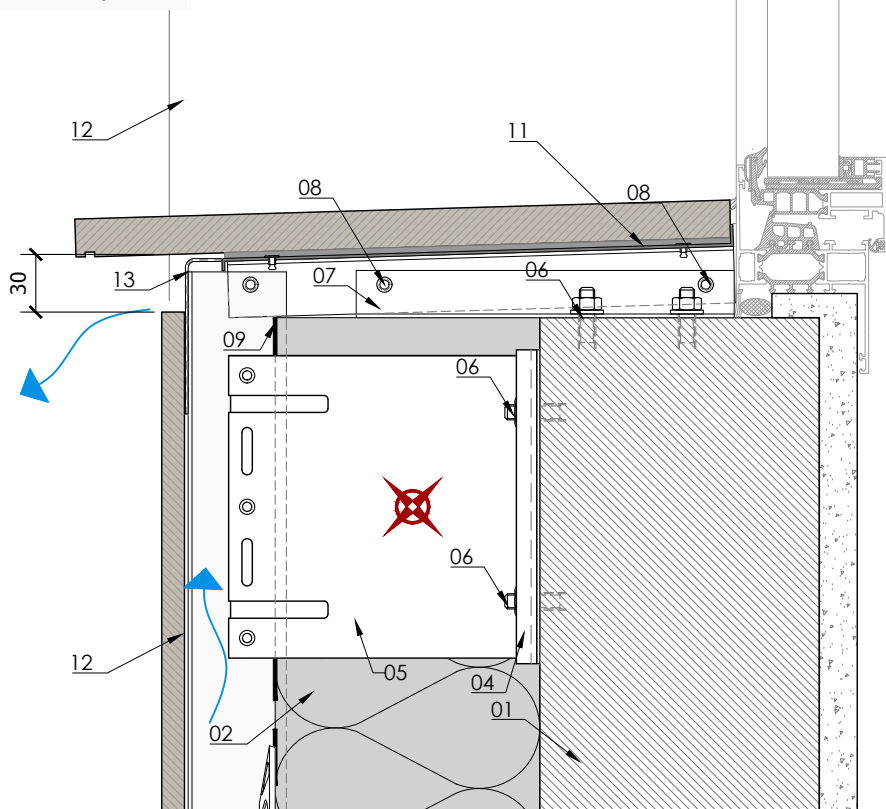
- 10 - Horizontal rail
- 11 - Kit for structural bonding
- 12 - Lapitec 12 mm thickness
- 13 - Flashing

SYSTEM LAPITEC B - FIXING WITH STRUCTURAL BONDING

Detail B-19 Window lintel solution with Lapitec



Detail B-20 Windowsill solution with Lapitec



MATERIALS:

01 - Support (eg: concrete, core bricks ...)
02 - Insulation layer (eg: mineral wool...)
03 - Insulation layer fixing element
04 - Thermo-stop

05 - Bracket (eg: aluminium, galvanised steel ...)
06 - Anchor
07 - Vertical profile
08 - Stainless steel fixings
09 - Vapour barrier

10 - Horizontal rail
11 - Kit for structural bonding
12 - Lapitec 12 mm thickness
13 - Flashing